



Henry Hoefner
Sec. 28, Calloway. Born in Hanover, Germany, in 1841. Came to America and settled in St. Charles County in 1850.



H. J. Selb
Hamburg.
Born near Matties, St. Louis County, June 14, 1847. Settled in St. Charles County March 22, 1870.



Henry F. Meyer
Deceased.
Born in Femme Osage, St. Charles County December 16, 1845.



W. T. McGlasson
Sec. 31, Calloway. Born in Prince Edward County, Virginia, in 1834. Settled in St. Charles County in 1852.



J. G. Goethe
Born in Hamburg, St. Charles County, January 25, 1850.



Andrew Lauer
Weldon Spring.
Born in St. Charles County in 1841.



Henry Reine
St. Peters.
Born in Hanover, Germany, August 3, 1832. Settled in St. Charles County in June 1850.



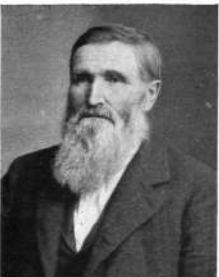
Louis P. Herculese
Born in St. Charles County May 16, 1851.



Charles Gotterman
Born on Section 31, Calloway Township, in 1845.



Peter Jacobs
Born in Prussia, Germany, January 19, 1836. Came to America and settled in St. Charles County in 1857.



Fritz Hensiek
Calloway.
Born in Germany in 1840. Came to America and settled in St. Charles County in 1856.



W. F. Huning
Dardeme Township.
Born in New Melle in 1859.



H. C. C. Dammer
General Merchandise. St. Charles.
Born in Hanover, Germany, March 31, 1839. Came to America in sailing vessel in 1855. Came to St. Charles County in 1861.



Edward Rickmers
Lock & Gun Smith, New Melle.
Born in St. Charles County March 23, 1837. Settled in New Melle in 1860.



C. F. Knapel
Matson, St. Charles County.



J. H. Piepmeier
Born in Germany in 1834. Came to America and settled in St. Charles County in 1834.



John B. Thro
Born in Mollan, Alsace, France, September 2, 1835. Came to St. Charles in October 1854.



C. A. Griesenauer
O'Fallon.
Born in the Tyrole, Dec. 25, 1849. Settled in St. Charles County in 1858.



Edmund Kessler
Weldon Spring.
Born in Dardene Township, April 28, 1838.



John Burton
Born in Barham, England, in 1828. Came to America and settled in St. Charles Co. in 1855.



H. M. Steed
Local Freight Agent.
Vice Pres. Union Savings Bank,
St. Charles. Born in Missouri in 1853.



Peter Arb
Harness Dealer, St. Charles.
Born in Tyrol, Austria, in 1845.
Came to America and St. Charles Co.
in 1857.



Henry Kemper
Born in St. Charles, Missouri,
July 7, 1840.



John Henry Brune
Born in St. Charles County in 1844.



R. Goebel
Photographer, St. Charles.
Born in Germany in 1835.
Came to St. Charles County in 1856.



R. C. Haensler
Attorney at-Law
Born in Germany Nov. 13, 1856.
Came to St. Charles County in 1879.



Joseph H. Alexander
Born February 29, 1828, East Baton
Rouge, La.
Came to St. Charles, Missouri,
April 15, 1843.



Joseph P. Renno
Born in Pennsylvania Sept. 8, 1838.
Came to St. Charles in September 1888.



William H. Boenker
Born in Germany in 1843.
Came to St. Charles in 1858.



W. F. Bloebaum
Post Master St. Charles.
Has been a resident of St. Charles since
his birth January 2, 1863.



Hon. Carl Daudt
Attorney, St. Charles.
Born in Germany in 1841. Came to
St. Charles County in 1863.



Richard C. Matson
Born on present farm September 17,
1849.



Henry Angert
Cashier First National Bank, St. Charles,
Born at St. Charles Nov. 7, 1845.



John H. Schnetlage
Retired Farmer,
Born in Germany in 1838. Came to
St. Charles in 1857.



John L. Thompson
Born June 3, 1842. Came to St. Charles
in November 1863.



Brice Edwards
Attorney, St. Charles.
Born in Warren County, Missouri,
March 27, 1854. Came to St. Charles Co.
in August 1881.



Henry F. Pleser
Born in St. Charles County, Missouri
August 3, 1839.



Carr Edwards
Born in Missouri in 1858. Came to
St. Charles in 1885.



J. M. Bode
Editor & Proprietor St. Charles
Democrat. Established in 1852.



Dr. W. Westphal
Born in Germany in 1868. Came to
St. Charles in 1895.



George D. Holirah
Born in St. Charles County, Feb. 22, 1870.



Ben L. Emmons
Manager of the Emmons Real Estate Title Company. Born Nov. 27, 1861.



Henry Anton Hallway
Born in Lee County, Iowa, August 1862. Came to St. Charles County, 1892.



Dr. William Carl Schmidt
Born in Wandsbeck, Germany, May 6, 1874. Came to America in 1886, and to St. Charles County in 1900.



Louis Ell
Born in Baden, Germany, in 1867. Came to St. Charles County in 1885.



Frank M. Fischer
Born in St. Charles County, October 30, 1867.



E. M. Holirah
County Judge. Born in St. Charles County in 1866.



M. J. Dixon
St. Charles. Born in St. Louis in 1851. Came to St. Charles County in 1877.



J. Henry Nolle
Born in St. Charles County in 1855.



William F. Achelpohl
Attorney. Born in St. Charles County, March 11, 1871. Elected Public Administrator St. Charles County in 1900.



George Wiegmann
Farmer. Born in St. Charles, Dec. 30, 1873.



John Platte
Contractor & Builder. Born in St. Charles, August 31, 1870.



H. W. Mittelbuscher
St. Charles. Born August 20, 1858.



M. Burgermaster
Born in Freyberg, Germany, Feb. 24, 1827. Came to America, and St. Charles County in 1833.



Rudolph Loetkameyer
Born in Germany in 1834. Came to America in 1853. St. Charles County in 1865.



E. Lee Renno
Editor Cosmos Monitor. Born in Granite City, Illinois, in 1874. Came to St. Charles in 1886.



Dr. Mitchell Castillo
Howell.



J. C. Debrecht
Merchant at Flint Hill. Born at St. Charles, Jan. 1, 1866.



August Bergsicker
Born in Femme Osage Township.



B. H. Dyer
Born in St. Charles County, December 18, 1874.



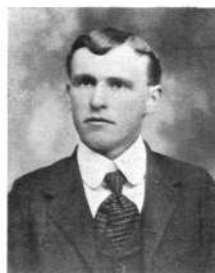
Bernard Fischer
Born in St. Charles County in 1879.



Otto Wohlgemuth
Born in Franklin County, Missouri,
January 16, 1862. Came to St. Charles
County in 1888.



Emil Marheineke
Dealer in General Merchandise,
St. Peters. Born in Hanover, Germany,
January 21, 1865. Came to St. Peters,
Aug. 27, 1878.



Frank Groenemann
Born in Femme, Osage Township,
December 14, 1877.



A. Sternfels
Represents—Harper Bros. Mule &
Horse Co., East St. Louis.



George Boettler
Nurseryman.
Born in St. Charles, Missouri, March 1,
1863.



Louis Wildschuetz
Born in Femme, Osage Township, in 1851.



Emil Schroeder
Deceased.
Born August 3, 1882, in Clinton County,
Illinois. Died October 16, 1904.



George Vetsch
Born in St. Charles County in 1857.



Michael Sutton
Hamburg.
Born in Wicklow County, Ireland.
Settled in St. Charles County in 1879.



Peter Fuchs
Born on present farm, Femme, Osage
Township, Feb. 21, 1861.



Vic. D. Dierker
County Clerk and Ex-officio Recorder
of Deeds of St. Charles Co., Mo.
Born Oct. 25, 1858, in St. Charles Co., Mo.



**Farm Residence of
Henry Wagemann**
Portage De Sioux.
He was born in Germany, Aug. 25, 1847.
Settled in St. Charles County in 1868.



Christopher M. Schaaf
Deceased.
Born in Warren County, Missouri, in
1839. Came to St. Charles County in
1860. Died May 6, 1901.



J. H. Fuermann



J. W. Coshow
Dardenne Township.
Born in St. Charles County, February 14,
1847.



Henry Uhlmansick, Jr.
Sec. 33, Calloway Township.
Born in Hanover, Germany, in 1869.
Came to America and St. Charles County
in 1888.



Herman Oberdick
Born on present farm, Femme, Osage
Township, Jan. 27, 1874.



L. E. Schulz
Sec. 31, Calloway Township.
Born in St. Charles County in 1845.



Charles Schultze and Wife
Born in Franklin County, Nov. 10, 1870,
and August 28, 1855, respectively,
Settled in St. Charles County, March
1896.



August Weinrich and Wife
Born in St. Charles County, Aug. 13,
1860, and Dec. 21, 1864, respectively.



William Schlermoir and Wife
He was born in Germany in 1833.
Came to America and St. Charles County
in 1849.



Edward Paul
Born Sept. 26, 1852.



William Amptmann and Wife
He was born in St. Charles County in
1867.



**The Evangelical Lutheran Church, School
and Parsonage,**
Augusta.



Mrs. Caroline Brinkhoff
Born in St. Charles County, Sept. 9,
1843.



**Farm Scene of
Christian Siem**
Femme Osage Township.



George F. Weinrich and Wife
New Melle.
He was born in New Melle, Sept 8,
1877.



Fritz Nadler and Wife
Born in St. Charles County in 1867, and
1866, respectively.



G. H. Woltemath and Wife
Sec. 20, Cuivre Township.
He was born in St. Charles County in
1860.



Chas. H. Ruebeling and Wife
Sec. 29, Calloway Township.
He was born in St. Charles County in
1859.



H. F. Meyer and Wife
He was born in Germany in 1844.
Came to America and St. Charles County
in 1859. She was born in St. Charles
County in 1850.



August Glessmann and Wife
He was born in St. Charles County in
1860.



Edward Greiwe and Wife
He was born in Femme Osage Town-
ship, January 6, 1870.



William Schnadler, Jr., and Wife
Born in St. Charles County in 1868, and
1875, respectively.



H. H. Knippenberg and Wife
He was born in Germany in 1824.
Came to America in 1834, and to Femme
Osage in 1837. Post Master, 55 years.



John H. Schwede and Wife
Sec. 19, Calloway Township.
He was born in St. Charles County in
1869.